

Initial settings Pico Neo 3 - v1

MaFEA – Making Future Education Accessible

PR2 – Guiding successful adoption



Funded by
the European Union



mafea.eu

MaFEA – Making Future Education Accessible

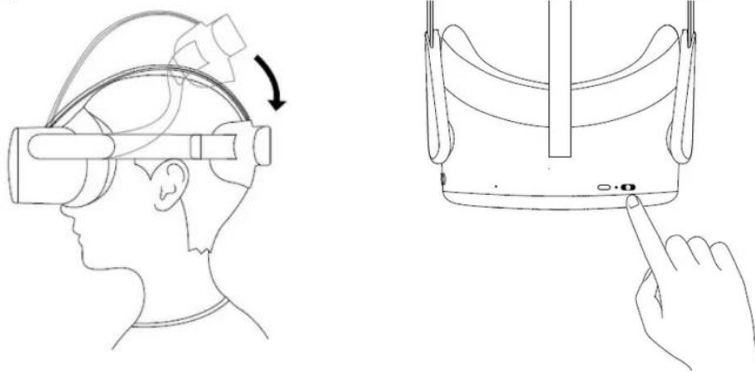
Initial settings Pico Neo 3

After the first physical contact with the equipment and its accessories, you will then be able to understand how to operate it.

Official link for technical details of the equipment [HERE](#).

First steps

1. Fully charge the equipment.
2. After adjusting the glasses to your head by adapting the adjustment tape (according to the previous tutorial) and after switching on the equipment by clicking on the respective button (following image), the settings start automatically.



3. Connect the controllers by clicking on the "Pico Button", as shown in the following image.



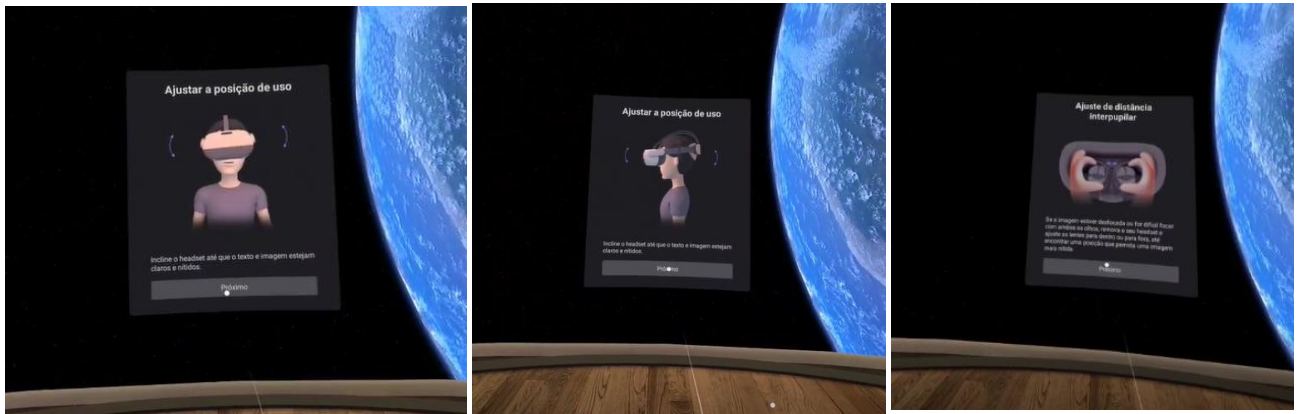
4. Select language and country.



mafea.eu

MaFEA – Making Future Education Accessible

5. Adjust the wearing position (head and lens).



6. Connect to a Wi-fi network by entering a password.



7. Accept the privacy policy and security policy.

8. Set the game limit mode.



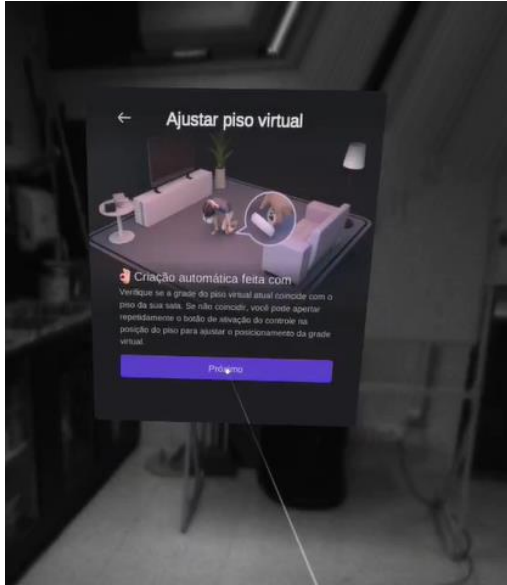


MaFEA – Making Future Education Accessible

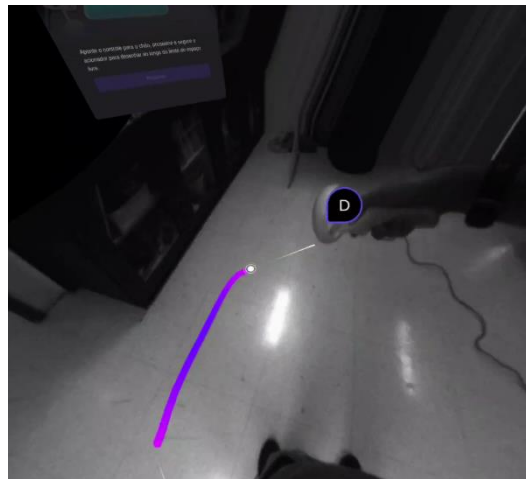
mafea.eu

Choosing custom mode, you should define the ground plan before drawing the boundary.

If the plan (the grid lines that will guide you) is not on the ground, it should be angled towards the floor, as shown in the image.



9. Next, outline the area where you can move around, paying attention to the objects in the space, trying to select only an area free from furniture or objects.

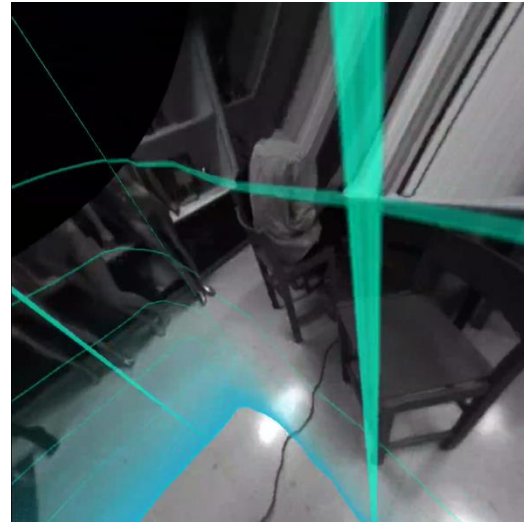
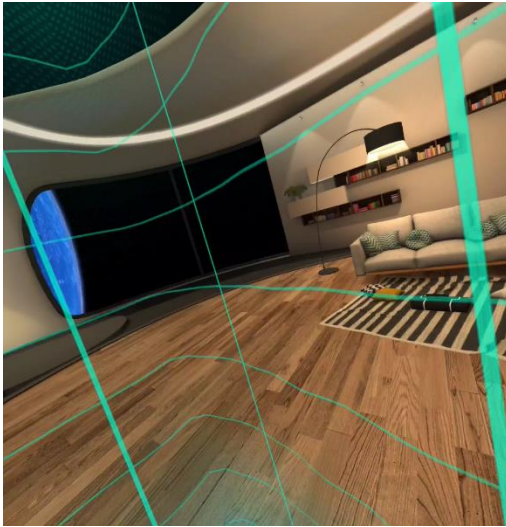


You will notice later on, as you move around in the virtual space, that when you approach the limits that you have defined, a grid will warn you that you are close to the limit and when the limit is crossed, you will be able to visualise the real space, being alerted to objects, people or furniture.



mafea.eu

MaFEA – Making Future Education Accessible



10. To have access to all the contents of Pico Neo 3, you must register and login.

11. Finally, you can consult games and applications, both paid and free. To use them, you must previously select the application and download it.

