

# Creating Dynamic guide for HoloLens2 – v1

MaFEA – Making Future Education Accessible

PR2 – Guiding successful adoption



Funded by  
the European Union

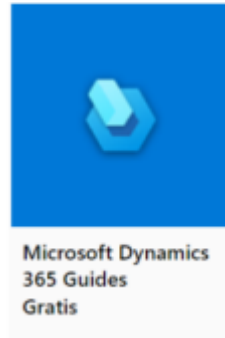


[mafea.eu](http://mafea.eu)

## MaFEA – Making Future Technology Accessible

### Creating Dynamic guide for HoloLens2 – v1

This guide will show you to how to make a guide with the tool dynamic guide. It is a very useful tool to make guides to operate with installations, tasks, ...



### Steps to work with the Microsoft Dynamics 365 Guides

Steps to do before you can start to make a guide.

1. You need some important things to construct your guides such as:
  - a. 3D printed parts
  - b. 3D models and holograms
  - c. Pictures
  - d. Movies
  - e. A HoloLens en dynamic 365 Guides licence
  - f. Patience and time
  
2. You have the dynamic guide on your computer and you have the app on your HoloLens. You need them both. With the guide on the computer you make the guide. This mean you make the instruction text, place pictures, place 3D models or holograms, tools and guidelines. On the app from the HoloLens you place the pictures and 3D models in a reality perspective.

Steps to make a guide,

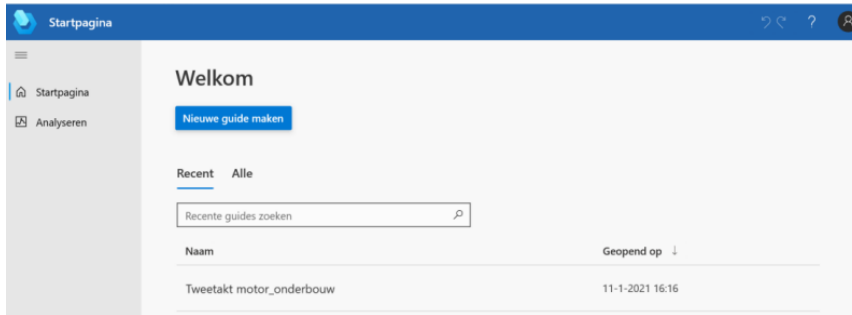
#### Step 1: initialisation

1. You have a to sign in Dynamic 365 Guides
2. You have to make a new Guide

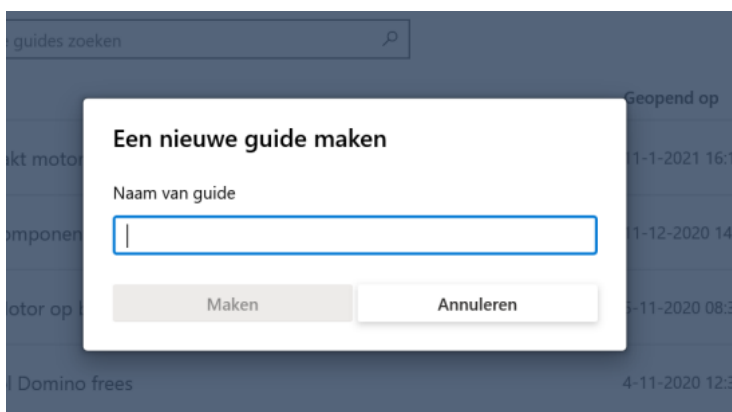


[mafea.eu](http://mafea.eu)

## MaFEA – Making Future Technology Accessible

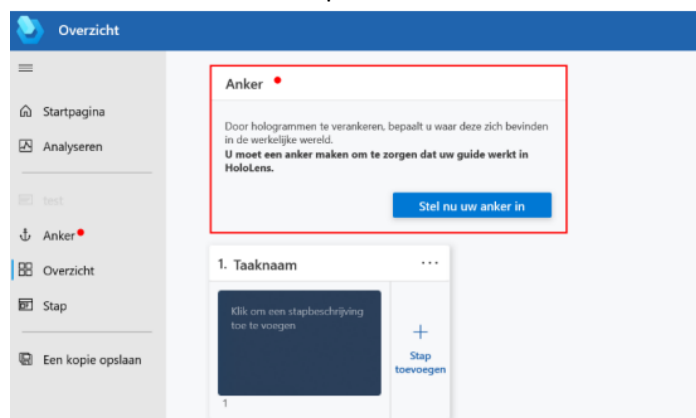


3. Give the new guide a name:



### Step 2: make an anchor

1. You have to make an anchor
  - a. An anchor is the connection you make between reality and the guidelines on the Hololens. It is a reference point.

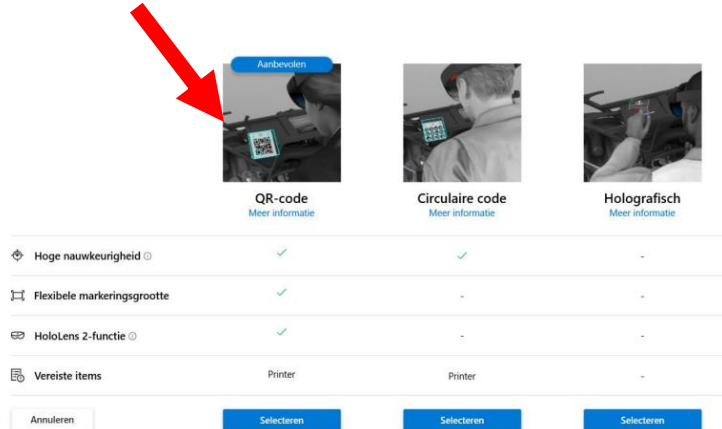




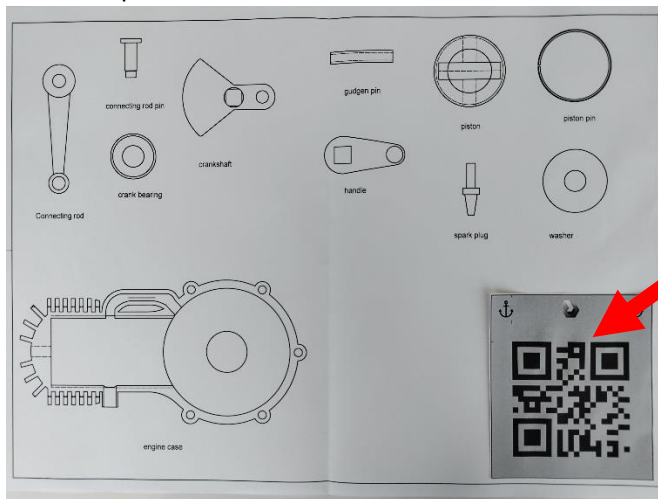
[mafea.eu](http://mafea.eu)

## MaFEA – Making Future Technology Accessible

- There are 3 options to choose an anchor. The method we choose is mostly with a QR-code anchor.



- Follow the several steps in the menu. It is very important to place the anchor in the reality (on a device, construction, machine, ...) and take a picture of it. Then the user see where the anchor is placed.



- Print and place the anchor in the reality.

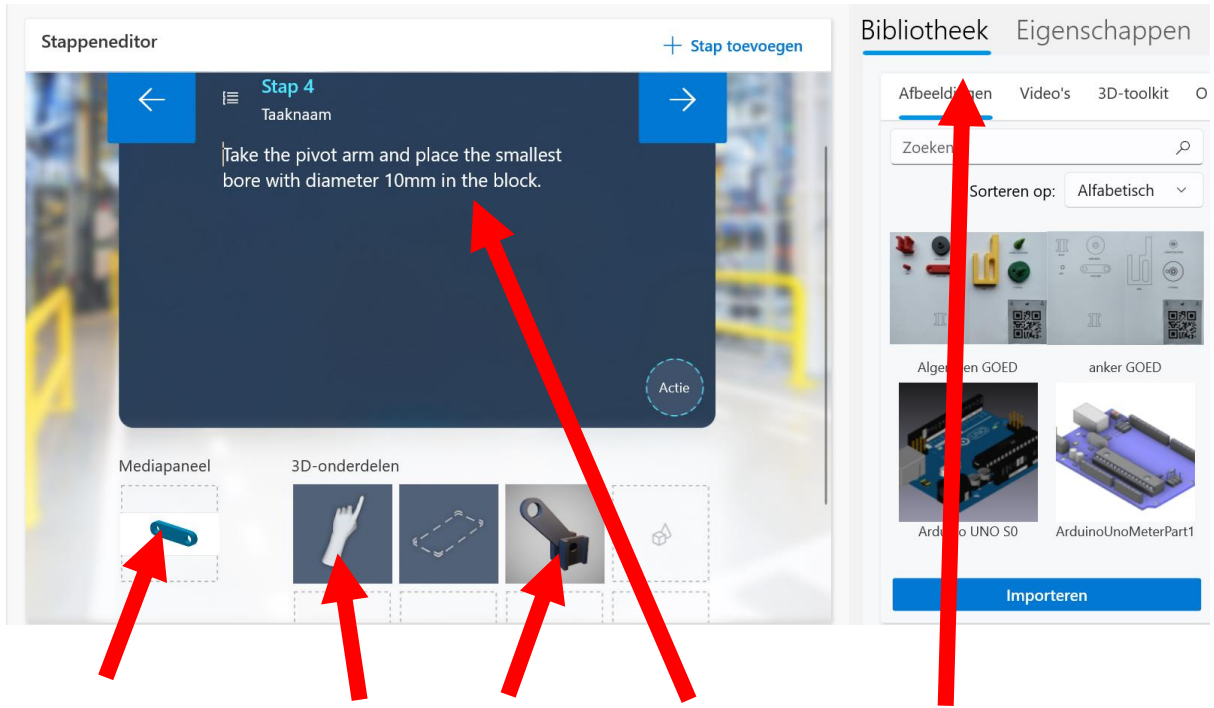


[mafea.eu](http://mafea.eu)

# MaFEA – Making Future Technology Accessible

## Step 3: make the guidelines

1. You have to make guidelines. You can do that step by step. Every step can be illustrated with pictures, 3D models, Holograms, instructions, ...



Picture

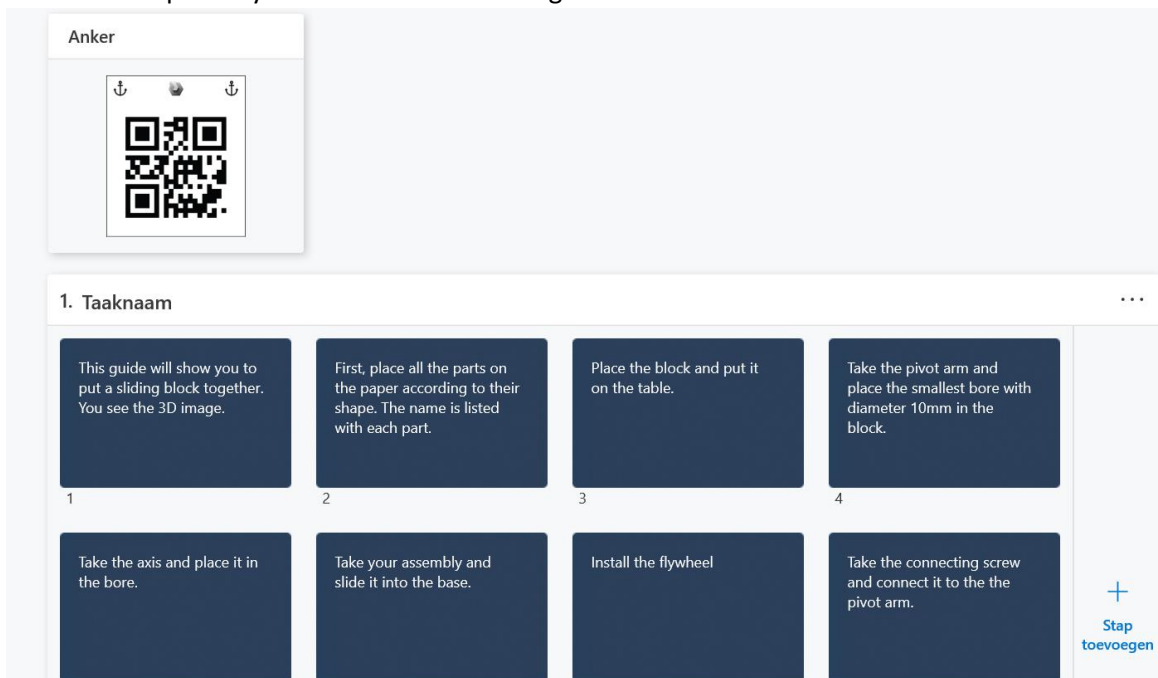
3D toolkit

3D image

instruction guide

library

2. You make steps and you finish at the end the guide





[mafea.eu](http://mafea.eu)

## MaFEA – Making Future Technology Accessible

Step 4: make the guidelines active on the HoloLens

1. Now you link the guidelines with the reality. Now you open the app Dynamic guides on the HoloLens.
- 2.